

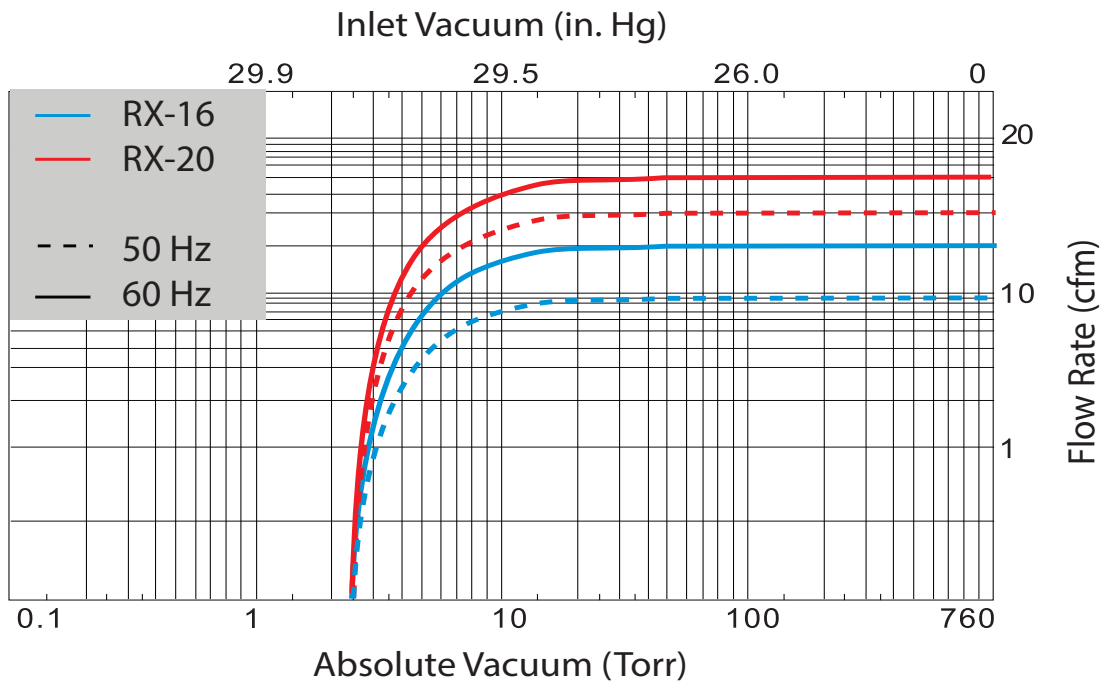
Republic offers the RX series of oil lubricated rotary vane vacuum pumps. They are single stage, air-cooled, and direct driven for continuous operation. The design is one of the most reliable and simplest vacuum pumps available. These rugged pumps are simple to install and easy to service and maintain. They are available with or without motor to meet your application needs. These vacuum pumps have a displacement range from 6 to 490 CFM (10 to 833 m³/hr) and maximum vacuum of 0.5 torr.



The RX series is used in a variety of industries such as meat packaging, food processing, thermoforming, composites, medical, laboratory, vacuum cooling, robotics, degassing, and autoclaves.

PERFORMANCE SPECIFICATIONS

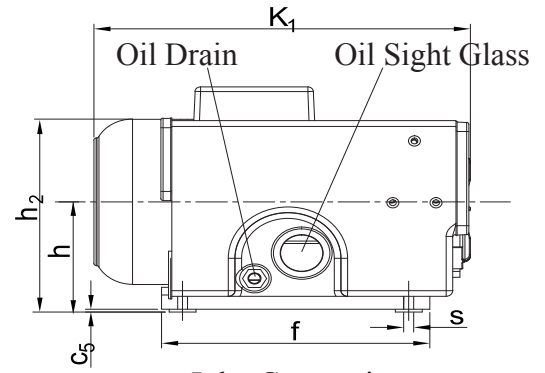
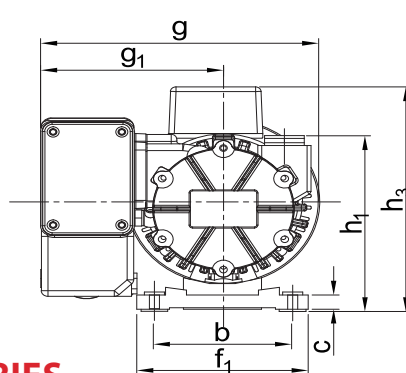
Model	Displacement (CFM/m ³ /hr)		Ultimate Vacuum Max (In. Hg./Torr/mbar)	Motor Output		Voltage 3 Phase (V)		Speed (rpm)		Noise Level (dB)		Weight (lb/kg)
	50 Hz	60 Hz	50/60 Hz	50 Hz	60 Hz	50 Hz	60 Hz	50 Hz	60 Hz	50 Hz	60 Hz	
16	9/16	11/19	29.8/2.5/3.3	0.55 kw	1.0 hp	220/380	230/460	1420	1700	61	63	53/24
20	12/20	14/24	29.8/2.5/3.3	0.75 kw	2.0 hp	220/380	230/460	1420	1700	61	63	56/25



APPROXIMATE DIMENSIONS

Model	Unit	a	a ₁	b	b ₁	c	c ₅	d ₁	e	e ₁	f	f ₁
16	in	8.0	2.0	4.9	1.6	0.6	0.2	1/2"	2.2	4.9	9.6	6.1
	mm	204.5	51	125	40	15	5	1/2"	55	125	244	155
20	in	8.0	2.0	4.9	1.6	0.6	0.2	1/2"	2.2	4.9	9.6	6.1
	mm	204.5	51	125	40	15	5	1/2"	55	125	244	155

Model	Unit	g	g ₁	h	h ₁	h ₂	h ₃	k ₁	o	s	Fill Oil	Inlet Port
16	in	10.2	6.5	4.6	6.9	11.0	9.5	13.5	2.2	0.3	0.9 QT	1/2" NPT
	mm	260	164	116	175	279	240	343	55	7	0.8 L	
20	in	10.2	6.5	4.6	6.9	10.9	9.5	13.5	2.2	0.3	0.9 QT	1/2" NPT
	mm	260	164	116	175	277	240	343	55	7	0.8 L	



OPTIONAL ACCESSORIES

- Inlet filter
- Filter pressure gauge
- Oil level switch
- Inlet check valve
- Vacuum gauge
- Motor starter
- Control panel
- PLC

