



CENTRAL VACUUM SYSTEMS

PRODUCT OVERVIEW

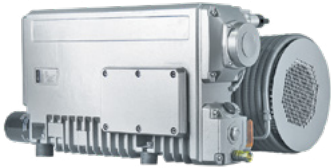
VRT-Series



RCV-Series



RX-Series



REPUBLIC CENTRAL VACUUM SYSTEMS are offered in standard and custom configurations. Our systems utilize our wide range of products designed to meet your application. Systems are built in accordance to applicable standards such as: NFPA, NEMA, ASME, and UL control panels.

Tank-mounted systems are ideal for saving space while modular stack systems can be configured for expansion. Each system consists of the following standard components: air-cooled Republic Manufacturing Vacuum Pump, electrical control panel, ASME coded receiver, check valve, isolation valve, flexible connector, vacuum gauge, and pressure transducer. Additional optional components are available and controls can be customized for automation or manual control. All service points are easily accessible for in-field maintenance.

Republic's diverse offering of vacuum pumps allows for systems to be customized to meet the exact flow and pressure required. Republic's dry-running VRT-Series provides vacuum up to 25.5" HgV while operating continuously and oil free. The RCV-Series provides similar vacuum with higher flows, while requiring minimal maintenance. Republic's RX-Series oil-lubricated pumps operate at deeper vacuum of 29.9" HgV and higher flows than the dry-running pumps. All systems are available in simplex through quadruplex.

Advantages

- Cost savings
- Continuous operation
- Maximum reliability
- Flexibility based on demand
- Exact process fit

Available Options

- Discharge manifolds
- Oil temperature switches
- Temperature gauges
- Fusible disconnects
- Circuit breakers
- NFPA99
- Bypass piping
- Auto-purge
- Tank drain assembly
- Control panels

Applications

Medical & Dental

- Laboratories
- Pharmaceutical
- Dental
- Surgical Vacuum

Food

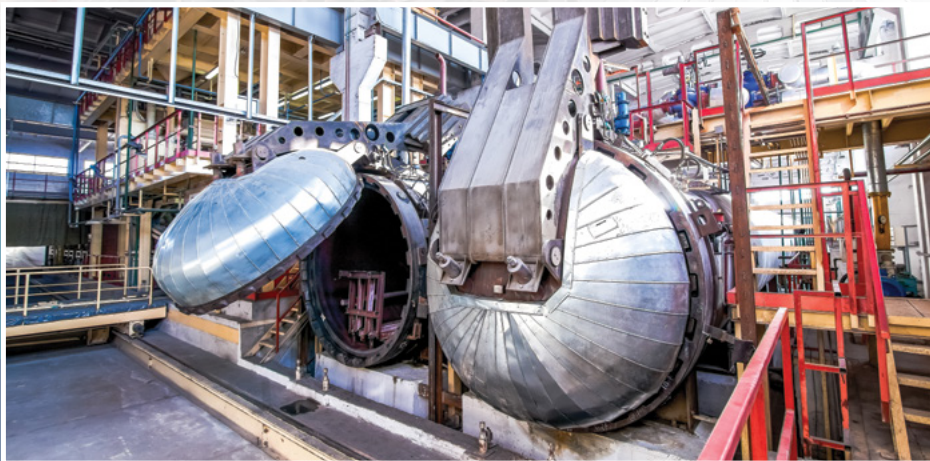
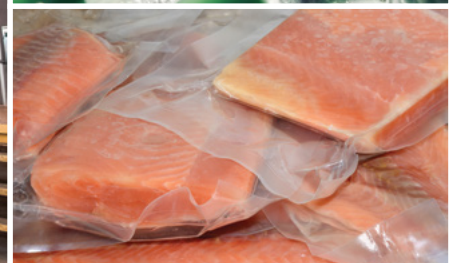
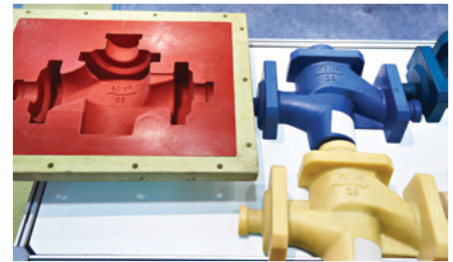
- Evacuation
- Packaging
- Thermoforming
- Autoclaves
- Drying
- Distillation
- Pneumatic Conveying

Plastics

- Degassing
- Impregnation
- Conveying

Other

- Priming
- Distillation
- Autoclaves
- Degassing
- Lamination
- Drying



Rotary Claw Vacuum Pump Systems



Model		CFM at 19 in.HgV	Installed Power (hp)	Tank Size (gal)	Dimensions (in)*		
HORIZONTAL TANK-MOUNTED							
Simplex	RCV-60/80	39/54	2/3	120	55	35	60
	RCV-120/160	75/102	5/7.5	120	75	50	60
	RCV-250/300	150/282	7.5/10	240	90	50	70
Duplex	RCV-60/80	78/108	4/6	120	55	35	60
	RCV-120/160	150/204	10/15	120	75	55	60
	RCV-250/300	300/564	20/30	240	90	55	70
STACK-MOUNTED/EXPANDABLE							
Duplex	RCV-120/160/250/300	150/204/300/564	10/15/15/20	240	73-85	73-78	99
Triplex	RCV-120/160/250/300	225/306/450/846	15/22.5/22.5/30	240	108-132	73-78	99
Quadraplex	RCV-120/160/250/300	300/408/600/1128	20/30/30/40	240	108-132	73-78	99

*For actual dimensions, please request certified drawing.

Oil-Lubricated Vacuum Pump Systems



Model		CFM at 19 in.HgV	Installed Power (hp)	Tank Size (gal)	Dimensions (in)*		
HORIZONTAL TANK-MOUNTED							
Simplex	RX-16/20/25/40	11/15/17/28	1/2/1.5/2	60	55	35	60
	RX-63/100/140	44/70/98	3/5/5	120	75	40	60
	RX-202	140	7.5	120	75	45	65
	RX-302	200	12	240	90	45	75
Duplex	RX-16/20/25/40	22/30/34/56	2/4/3/4	60	55	35	60
	RX-63/100/140	88/140/196	6/10/10	120	75	40	60
	RX-202	280	15	120	75	45	65
	RX-302	400	24	240	90	45	75
VERTICAL TANK-MOUNTED							
Simplex	RX-16/20/25/40	11/15/17/28	1/2/1.5/2	60	35	50	75
	RX-63	44	3	120	35	60	100
Duplex	RX-16/20/25/40	22/30/34/56	2/4/3/4	60	35	50	75
	RX-63	88	6	120	35	60	100
STACK-MOUNTED/EXPANDABLE							
Duplex	RX-63/100	88/140	6/10	120	65	65	85
	RX-140	196	10	240	80	70	100
	RX-202/302	280/400	15/24	240	85	80	100
	RX-402/630	562/880	40/50	240	100	105	100
Triplex	RX-63/100	132/210	9/15	120	105	65	85
	RX-140	294	15	240	120	70	100
	RX-202/302	420/600	22.5/36	240	135	80	100
Quadraplex	RX-63/100	176/280	12/20	120	105	65	85
	RX-140	392	20	240	120	70	100
	RX-202/302	1124/1760	30/48	240	135	80	100

*For actual dimensions, please request certified drawing.

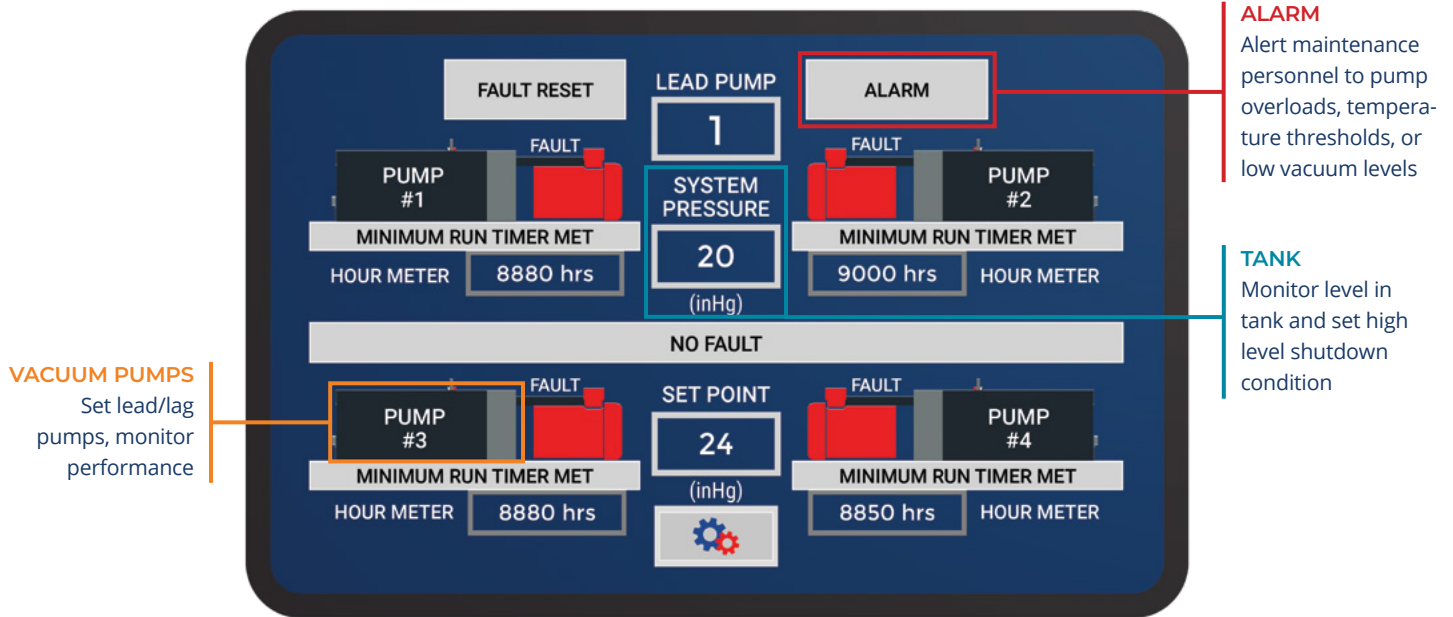
Dry-Running Rotary Vane Vacuum Pumps



Model		CFM at 19 in.HgV	Installed Power (hp)	Tank Size (gal)	Dimensions (in)*		
HORIZONTAL TANK-MOUNTED							
Simplex	VRT-410/416/425/440	4/6/12/17	0.6/0.9/1.2/2	60	55	35	60
	VRT-3060/3080	33/45	3.5/3.5	60	75	45	60
	VRT-3100/3140	54/76	4.8/6.4	120	75	50	60
	VRT-3250	147	8.9	240	90	60	75
Duplex	VRT-410/416/425/440	8/12/24/34	1.2/1.8/2.4/4	60	55	35	60
	VRT-3060/3080	66/90	7/7	60	75	45	60
	VRT-3100/3140	108/152	9.6/12.8	120	75	50	60
	VRT-3250	294	17.8	240	90	60	75
VERTICAL TANK-MOUNTED							
Simplex	VRT-410/416/425/440	4/6/12/17	0.6/0.9/1.2/2.0	60	35	50	75
	VRT-3060/3080	33/45	3.5/3.5	120	35	60	100
Duplex	VRT-410/416/425/440	8/12/24/34	1.2/1.8/2.4/4	60	35	50	75
	VRT-3060/3080	66/90	7/7	120	35	60	100
STACK-MOUNTED/EXPANDABLE							
Duplex	VRT-3060/3080	66/90	7/7	120	65	65	85
	VRT-3100	108	9.6	120	80	75	100
	VRT-3140/3250	152/294	12.8/17.8	240	85	80	100
Triplex	VRT-3060/3080	99/135	10.5/10.5	120	105	65	85
	VRT-3100	162	14.4	120	120	75	100
	VRT-3140/3250	228/441	19.2/26.7	240	135	80	100
Quadraplex	VRT-3060/3080	132/180	14/14	120	105	65	85
	VRT-3100	216	19.2	120	120	75	100
	VRT-3140/3250	304/588	25.6/35.6	240	135	80	100

*For actual dimensions, please request certified drawing.

HMI Display | *Graphic-based visualization*



Standard Control

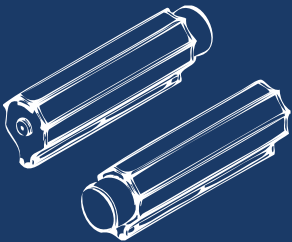
- UL 508A approved control panel with NEMA 12 enclosure and through-the-door pump disconnects
- Automatic lead/lag sequencing with alteration for even wear of pumps
- Automatic response to high demand by bringing additional pumps on line
- HMI touch screen for overview of system vacuum level, pump status, run time hours, alarm log, and timer mode
- Hand-Off-Auto (HOA) switch for each pump
- Single point power connection
- 120Vac control transformer with fused primary and secondary protection
- Vacuum transducer
- Dry contacts for remote monitoring
- Indication for pump(s) on and alarm

Optional Controls

- Variable speed drives (VFD) for soft startup and matching performance with demand
- NEMA 3R and 4X enclosures
- BACnet—Provides the format and commands for discovering and controlling systems
- LonWorks—Allows multiple devices in a peer-to-peer configuration and also provides a complete set of network management functions.



AIR KNIFE SYSTEMS



CENTRIFUGAL BLOWERS



REGENERATIVE BLOWERS



VACUUM PUMPS



5131 Cash Road, Dallas, TX 75247 | 800.847.0380 | republic-mfg.com

