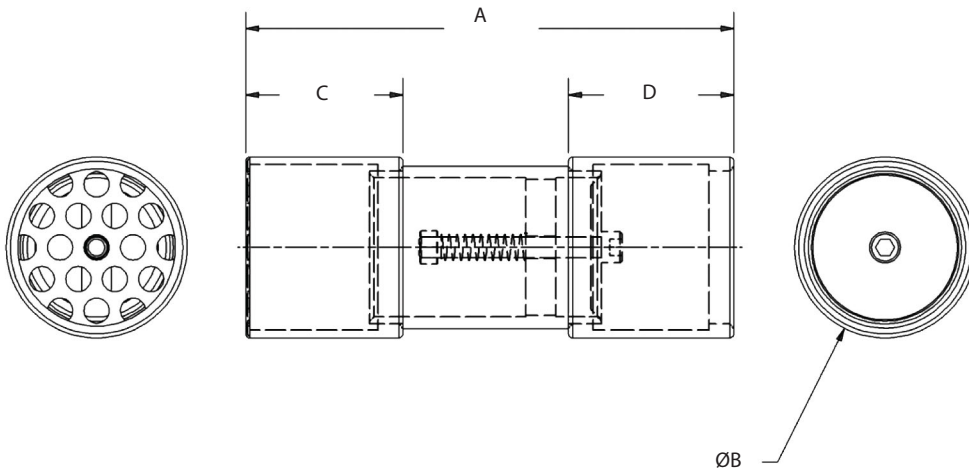


The Republic Relief Valve is constructed of zinc-plated mild steel and is designed to protect blowers from overpressure in a blocked-off mode during vacuum or pressure operation. Each valve can be set by the customer to the desired vacuum or pressure level. Commonly used with Regenerative Blowers, Positive Displacement Blowers, and Rotary Vane Pumps.



## Dimensions



Size (FNPT)	Part Number	A	ØB	C	D	Weight
1.25	200-0525	6-1/8 in	2-1/8 in	2 in	2-1/16 in	2 lb
		155 mm	54 mm	51 mm	52 mm	0.9 kg
1.50	200-0510	6-1/8 in	2-1/8 in	2 in	2-1/16 in	3 lb
		155 mm	54 mm	51 mm	52 mm	1.4 kg
2.00	200-0516	7-3/8 in	2-3/4 in	2-3/8 in	2-1/2 in	3 lb
		187 mm	70 mm	60 mm	64 mm	1.4 kg
2.50	200-0518	7-3/8 in	3-1/4 in	2-1/2 in	2-1/2 in	4 lb
		187 mm	83 mm	64 mm	64 mm	1.8 kg
3.00	200-0520	6-1/2 in	3-11/16 in	2-7/16 in	2-1/2 in	8 lb
		165 mm	94 mm	62 mm	64 mm	3.6 kg
4.00	200-0527	8-7/32 in	4-29/32 in	2-1/2 in	3-19/40 in	10 lb
		209 mm	125 mm	64 mm	88 mm	4.5 kg