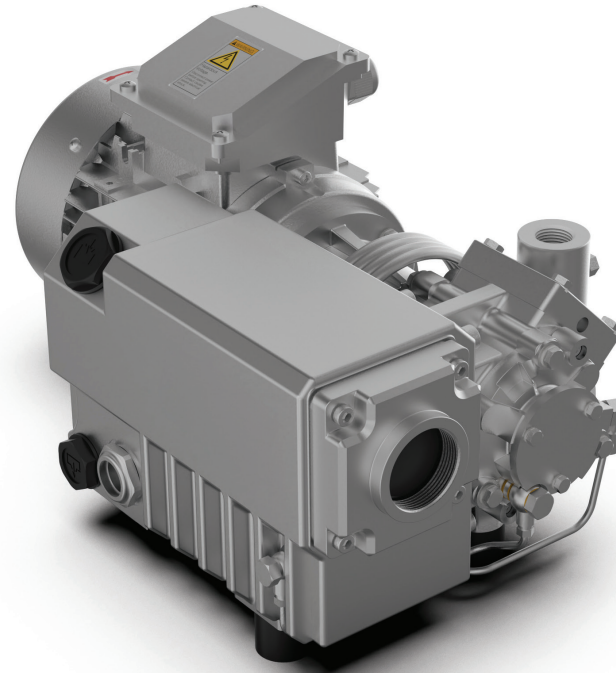


Maintenance Kits and Parts List for the RXA-21

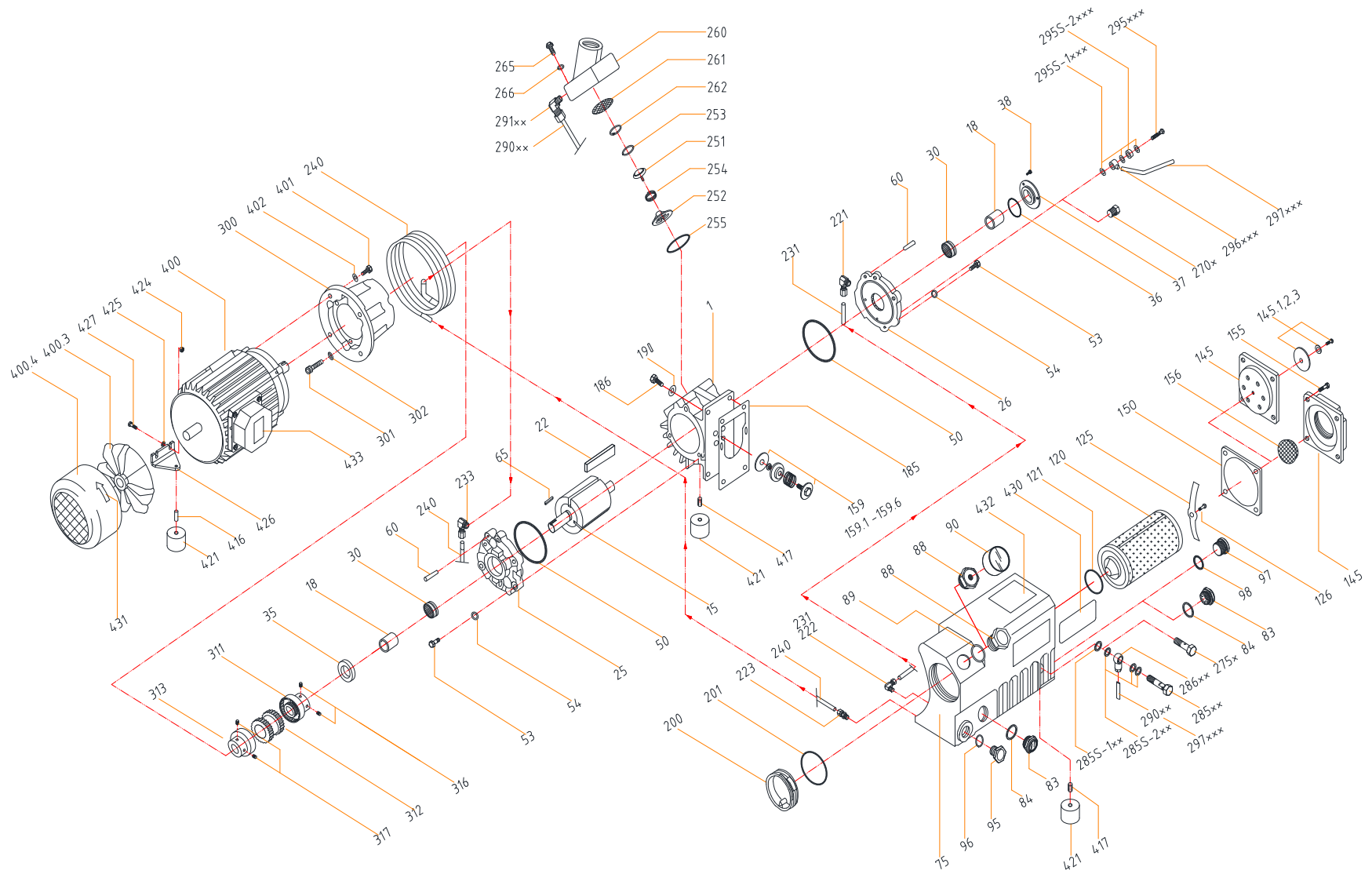


RXA-21/RXA-21-SP
OIL LUBRICATED VACUUM PUMP

Part Numbers cover all revisions and motor configuration of RXA-21

RXA-21/RXA-21-SP

OIL LUBRICATED VACUUM PUMP



1.800.847.0380
5131 Cash Road Dallas, TX 75247 USA

info@republic-mfg.com
www.republic-mfg.com

PARTS LIST

Pos. No.	Part No.	Description	Qty	Notes
490	0040.490.00	GASKET KIT, RXA-16	1	
500	0040.500.A0	Rebuild Kit, RXA-12/21	1	KITS
501	0040.501.00	Filter Kits1L-S1, RXA-16	1	
1	0020.001.A0	Cylindere68 x 70 / PCD90x6M6 / ø8 Add, RXA-12/16/21	1	
15	0020.015.A0	Rotore58x70, RXA-12/16/21	1	
18	0020.018.00	Sleeve, BearingR ø15xø20x23, RXA-12/16/21	2	Included in Rebuild Kit
22	0020.022.B0	Vane70x22x3.85, G11, RXA-12/16/21	3	Included in Rebuild Kit
25	0020.025.A0	A-end plate, motor sideID20.5 / PCD 90 x3ø7, ø4 > ø8, RXA-12/16/21	1	
26	0020.026.A0	B-end plate, Fan sideID20.5 / PCD 90 x3ø7, ø4 > ø8, RXA-12/16/21	1	
30	0000.G01.00	Bearingø203, RXA-16	2	Included in Rebuild Kit
35	0000.USA.00	Shaft seal, vitone20xø32x2.5, RXA-12/16/21	1	Included in Rebuild Kit
36	0000.U05.00	O-ring, Bracketø24x3.5, RXA-12/16/21	1	Included in Rebuild Kit
37	0020.037.00	Bracketø31.5xø60x12, RXA-12/16/21	1	
38	0000.A5D.00	Hex. head screwM5x12, RXA-12/21	3	
50	0000.U13.00	O-Ring, End plate ø70x2.5, RXA-16	2	Included in Rebuild Kit
53	0000.A6G.00	Hex. head screwM6x25, RXA-12/21	6	
54	0000.F2D.00	Spring lock washer	6	
60	0000.2HO.00	Taper pinø4x25, RXA-12/16/21	4	Included in Rebuild Kit
60	0000.5KO.00	Dowel pinø8xL25xM5, RXA-12/16/21	4	
65	0000.8DE.00	A-Shaft key, Motor sideø5x5x15, RXA-12/16/21	1	
75	0020.075.00	Oil sump, RXA-12/16/21	1	
75	0020.075.01	Oil sumpSump Change of machining location, RXA-12/16/21	1	
83	0000.OSF.00	Oil sight glass G 3/4", RXA-16	1	
84	0000.UTA.00	Gasket, Oil sight glassP26 Teflon, RXA-12/16/21	1	Included in Rebuild Kit
88	0000.ORF.00	Plug, Oil fillG 3/4", Plastic type, RXA-12/16/21	1	
88	0000.OWF.A0	Plug, Oil fillG 3/4", 1/8" tap for gage, RXA-12/16/21	1	
89	0000.URA.00	O-Ring, Oil fill plug (AL type w/ gage) P26 Teflon, RXA-12/16/21	1	Included in Rebuild Kit
89	0000.U07.01	O-Ring, Oil fill plug (Plastic type) ø27x12.6, RXA-12/16/21	1	
90	00GA.090.00	Pressure gage01 Bar, RXA-12/16/21	1	
95	0000.OQE.00	Plug, Oil drainG 1/2" Plastic, RXA-12/16/21	1	
96	0000.U04.00	O-Ring, Oil drain plug ø22 x T2.0, RXA-16	1	Included in Rebuild Kit
120	0020.120.00	Exhaust filterø35xø70x130, RXA-12/16/21	1	Included in Rebuild Kit
121	0000.U08.00	O-ring, Exhaust filterø35x4.0, RXA-12/16/21	1	Included in Rebuild Kit
125	0020.125.00	Exh. Filter spring Assembly106x12x11.5 / M4, RXA-12/16/21	1	
126	0000.E3F.00	Slotted cheese head machine screw	1	
145	0060.145.00	Exhaust cover (Threaded flange)Al, 88x88 / 4ø6.5, PF 11/4", RXA-12/16/21	1	
145	0020.145.A0	Exhaust cover (w/ rubber flap)Plastic, 88x88 / 4ø6.5, 6ø9, RXA-12/16/21	1	
145-1	0020.145.01	Rubber Flap for 02145ø54xø7x2.12, RXA-12/16/21	1	
145-2	0020.145.02	Washer for 02145ø18xø6.5x11, RXA-12/21	1	
145-3	0000.E3I.00	Slotted cheese head screw for 02145M5x10, RXA-12/21	1	
150	0020.150.00	Gasket, Exhaust cover 87x87x11, RXA-12/16/21	1	Included in Rebuild Kit
155	0000.B6F.00	Hex. Socket Head Cap Screw	4	
156	0060.156.00	Outlet screenø65x11, RXA-12/16/21	1	
159	0020.159.A0	Exhaust valve ass'y (159.1-159.6)M6xø34.7, RXA-12/16/21	1	
159.1	0020.159.A1	Exhaust valve fixed bolt w/washerM6xø8xL28+ø8.5xø30x1.75, RXA-12/21	1	
159.3	0000.V09.00	Exhaust valve spring1.8xø21.6xNf4xL15, RXA-12/16/21	1	
159.4	0020.159.04	Exhaust valve plateø8xø34.7x18, RXA-12/16/21	1	
159.5	0020.159.05	Exhaust valve lock nutM6x12.9x14, RXA-12/16/21	1	
159.6	0020.159.06	Exhaust valve seat plateø8.2xø36x11.9, RXA-12/16/21	1	Included in Rebuild Kit
185	0020.185.00	Gasket, Cylinder66x130x11, RXA-12/16/21	1	Included in Rebuild Kit
186	0000.A8F.00	Hex. head screwM8x20, RXA-12/21	4	
190	0000.F2E.00	Spring lock washer	4	
200	0020.200.00	Plug, DrumR 2", RXA-12/16/21	1	
201	0000.U10.00	O-ring, Drum plugø55x3.0, RXA-12/16/21	1	Included in Rebuild Kit

Pos. No.	Part No.	Description	Qty	Notes
221	00HF.002.00	BLM, Hydraulic fittingPF 1/8"xø4, RXA-12/16/21	1	
222	00HF.002.00	BLM, Hydraulic fittingPF 1/8"xø4, RXA-12/16/21	1	
223	00HF.010.00	BMC, Hydraulic fittingPF 1/8"xø6 (B.S), RXA-12/16/21	1	
231	0020.231.00	Oil tube (B)ø4x212, RXA-12/16/21	1	
233	00HF.007.00	Elbow hydraulic fittingBLS 1/8"xø6 (B.S), RXA-12/16/21	1	
240	0020.240.00	Cooling spiral Coilø128x42, RXA-12/16/21	1	
251	0020.251.A0	Check valve platePlastic, ø4.4 / ø30x23.5, RXA-12/16/21	1	
252	0020.252.A0	Check valve guidePlastic, ø4.5 / ø46x15.5, RXA-12/16/21	1	
253	0000.U06.00	O-Ring, Check valve plateø24 x T2.0, RXA-16	1	Included in Rebuild Kit
254	0020.254.00	Spring, Check valve D21xM15xL18xø4.5, RXA-12/16/21	1	
255	0000.U11.00	O-ring, Inlet partø56x2.5, RXA-12/16/21	1	Included in Rebuild Kit
260	0020.260.A1	Inlet flange, L typeG 1/2", G1/8" side, RXA-12/16/21	1	
260	0020.260.A2	Inlet flange, NM typeG 1/2", RXA-12/16/21	1	
261	0020.261.B0	Oil Screensø25x0.5, RXA-12/16/21	1	Included in Rebuild Kit
262	0000.I16.00	Retaining ring for bores ø26x11, RXA-16	1	
265	0000.A6G.00	Hex. head screwM6x25, RXA-12/21	4	
266	0000.F2D.00	Spring lock washer	4	
270*	0000.0TB.00	Plug (For N Only)G1/8", RXA-12/16/21	1	
275*	0020.275.00	Oil return valve (For N Only)M8x1.0x30, RXA-12/16/21	1	
275**	00HF.103.00	Sealing ring (For N Only) for 275"ø8.5xø14+1t, RXA-12/16/21	1	
285**/**	0020.285.00	Oil recirculation screw (For L/NM)M8x1.0x40, RXA-12/21	1	
2855-1**/**	00HF.103.00	Sealing ring (For N Only) for 275"ø8.5xø14+1t, RXA-12/16/21	1	
2855-2**/**	00HF.102.00	Sealing ring (For L/NM) for 285"ø8.5xø13x11, RXA-12/16/21	3	
286**/**	0020.286.00	Banjo fitting (For L/NM) in oil sumpø8.5xø4, RXA-12/16/21	1	
290**	0020.290.01	Return oil tube (For L Only)Sump Change of machining location, RXA-12/16/21	1	
291**	00HF.002.00	BLM, Hydraulic fittingPF 1/8"xø4, RXA-12/16/21	1	
291.1	0020.291.01	Brass nozzle for L kit of L21ø0.9xø4xL6, RXA-12/16/21	0	
2955-2***	00HF.106.00	Sealing Ring (For NM) for 295"ø10xø14x3t, RXA-12/16/21	1	
2955-1***	00HF.105.00	Sealing Ringø10xø14x1t, RXA-12/16/21	3	
295***	0020.295.00	Oil Return Valve (For NM Only)ø3.7xG1/8"xL22, RXA-12/16/21	1	
296***	0020.296.00	Banjo fitting (For NM Only) in end plateBrass, ø10.3 / M8x1.0, RXA-12/16/21	1	
297***	0020.297.01	Oil Return Tube (For NM Only)Sump Change of machining location, RXA-12/16/21	1	
300	0020.300.00	Motor Mounting Bracket, IEC/IEC, Fr 71, PCD 76/4ø7, RXA-12/16/21	1	
301	0000.B6P.00	Hex. Socket Head Cap ScrewM6x70, RXA-12/21	3	
302	0000.F2D.00	Spring lock washer	3	
310A (New)	0040.310.A0	Coupling Set (311A - 313A)Sure Flex type, RXA-12/16/21	1	
311A	0040.SCP.00	Coupling, pump sideSure Flex type, ø55xø15, RXA-12/16/21	1	
312A	0040.SCI.00	Coupling insert (Spider)Rubber, ø55x13t, RXA-12/16/21	1	Included in Rebuild Kit
313A	0040.SCM.00	Coupling, Motor side (IEC)Sure Flex type, ø55xø14, RXA-12/16/21	1	
310B (New)	0040.310.B0	Coupling set (311 - 313)Sure Flex type, RXA-12/16/21	0	
313A	0040.SCM.A0	Coupling, Motor side (IEC)Sure Flex type, ø55xø19, RXA-12/16/21	1	
316	0000.C6B.00	Set screw (Pump side)M8x10, RXA-12/21/402/500/630	2	
400.3	0040.400.03	Motor Fan (IEC), RXA-12/16/21	1	
400.4	0040.400.04	Motor Fan Cover (IEC), RXA-12/16/21	1	
401	0000.A6G.00	Hex. head screwM6x25, RXA-12/21	4	
402	0000.F2D.00	Spring lock washer	4	
416	0000.C8H.00	Slotted set screwM8x30, RXA-12/16/21/25/40	1	
417	0000.C8F.00	Slotted set screw	2	
419	0020.419.00	Sleeve, Bearingø9xø25x10t, RXA-12/16/21	1	
421	0000.F8E.00	Rubber footø30x20/M8, RXA-12/16/21	3	
430	1111.001.00	Name plateAL, 85 x 38 x 10.4, RXA-12/16/21	1	
431	1111.003.00	Directional arrow label 15x40, RXA-16	1	
510	0020.510.00	Conversion kit, L type20Torr (including # 022602), RXA-12/16/21	1	
530	0020.530.00	Conversion kit, NM type2 Torr, RXA-12/16/21	1	
550	0020.550.00	Inlet check valve kit (251 - 266), RXA-12/16/21	1	
800	00IF.001.00	Inlet air filterG 1/2" S, Canister(IF 110), RXA-12/16/21	1	
900	0020.900.00	Pump Module module, RXA-12/16/21	1	



1.800.847.0380

5131 Cash Road Dallas, TX 75247 USA

info@republic-mfg.com

www.republic-mfg.com