

Maintenance Kits and Parts List for the RXA-40

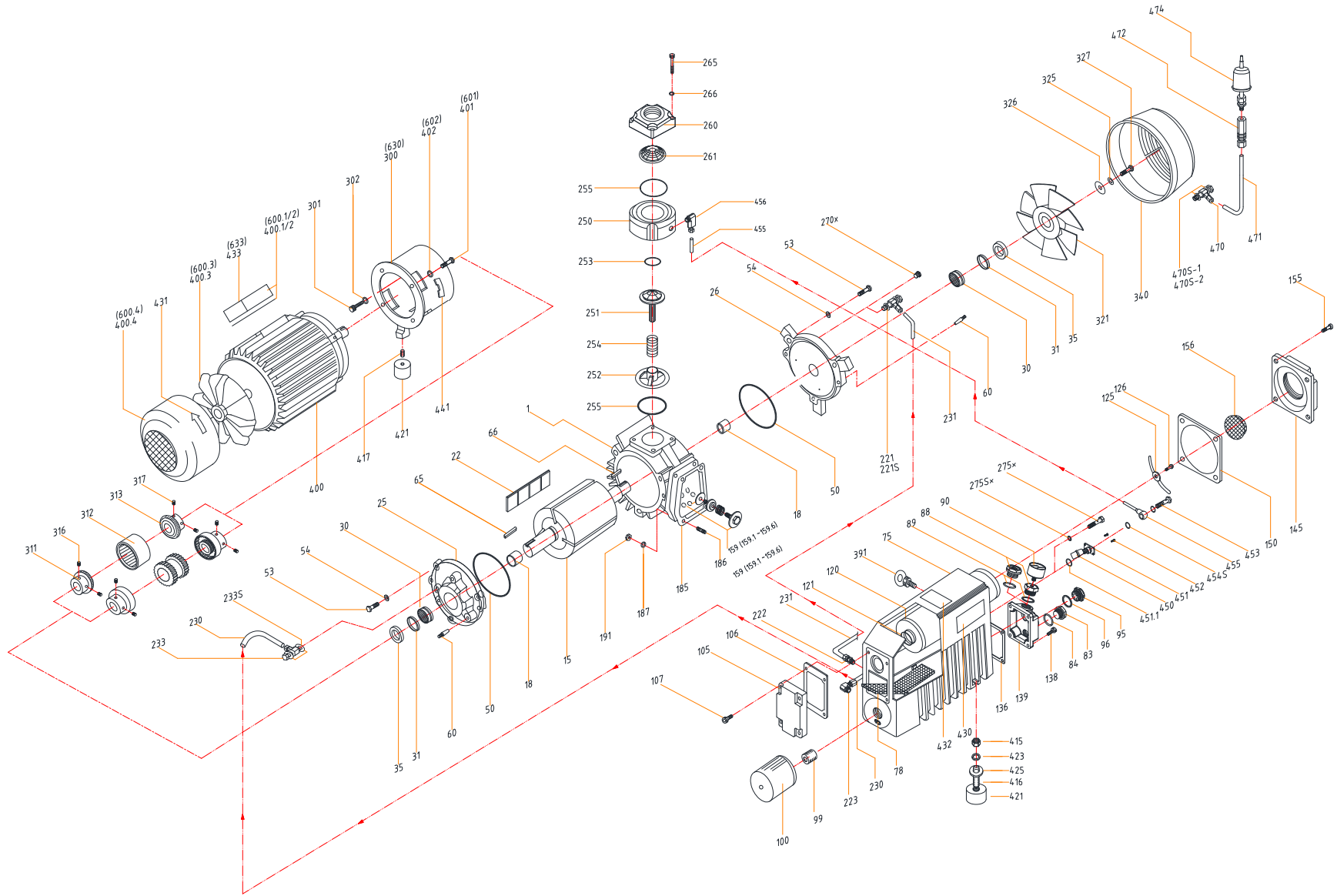


RXA-40/RXA-40-SP
OIL LUBRICATED VACUUM PUMP

Part Numbers cover all revisions and motor configuration of RXA-40

RXA-40/RXA-40-SP

OIL LUBRICATED VACUUM PUMP



1.800.847.0380
5131 Cash Road Dallas, TX 75247 USA

info@republic-mfg.com
www.republic-mfg.com

PARTS LIST

Pos. No.	Part No.	Description	Q ty	Notes
490	0060.490.01	Gasket Kit, RXA-40	1	
500	0080.500.02	Rebuild Kit, RXA-40	1	KITS
501	0080.501.00	Filter Kit, S3LS3, RXA-40	1	
1	0080.001.A0	CylinderD100x140/PCD130/6-M8, e8 Add, RXA-40	1	
15	0080.015.00	Rotoraø6x140, RXA-40	1	
18	0060.018.00	Sleeve, Bearing IRa20*ø25*38.5, RXA-25/40	2	Included in Rebuild Kit
22	0080.022.00	Vane140x30x3.80, G11, RXA-40	3	Included in Rebuild Kit
25	0060.025.A0	A-end plateID31/PCD130x3-e9.0, e4 -> ø8, RXA-25/40	1	
26	0060.026.A0	B-end plateID31/PCD130x3-e9.0, e4 -> ø8, RXA-25/40	1	
30	0000.G02.00	BearingRNA 4904, RXA-25/40	2	Included in Rebuild Kit
31	0060.031.00	Sleeve(Spacer Ring), RXA-25/40	2	
35	0000.U5B.00	Shaft sealø25xø37x6, RXA-25/40	2	Included in Rebuild Kit
42	0060.042.00	Supporting rings35xø70x0.5t, RXA-25/40	2	
43	0000.A4B.00	Hexagon head screwM4x8, RXA-25/40	4	
47	0000.OAA.00	PlugG1/8", RXA-100/25/40/63	1	
50	0000.U17.00	O-Ring, End plateø108x3, RXA-25/40	2	Included in Rebuild Kit
53	0000.A8H.00	Hexagon BoltM8x30, RXA-100/25/40/63	6	
54	0000.F2E.00	Spring lock washer	6	
60	00000.5KO.00	Taper pinø8 xL25 x M5, RXA-100/25/40/63	4	Included in Rebuild Kit
63	0000.OAA.00	PlugG1/8", RXA-100/25/40/63	1	
65	0000.BE1.00	A-Shaft key6x6x30, RXA-40	1	
66	0000.BEG.00	B-Shaft key6x6x20, RXA-25/40	1	
75	0060.075.CO	Oil sump, RXA-25/40	1	
78	0060.078.00	Steel demisterS-STL, RXA-25/40	1	
79	0060.079.A0	Sheet metal baffleS-STL, RXA-25/40	1	
83	0000.OSF.00	Oil sight glass G 3/4", RXA-16	1	
84	0000.UTA.00	Gasket, Oil sight glassP26 Teflon, RXA-12/16/21	1	Included in Rebuild Kit
88	0000.OJWF.A0	Plug, Oil fillG 3/4", 1/8" tap for gage, RXA-12/16/21	1	
88	0000.ORF.00	Plug, Oil fillG 3/4", Plastic type, RXA-12/16/21	1	
89	0000.URA.00	O-Ring, Oil fill plug (AL type w/ gage) P26 Teflon, RXA-12/16/21	1	
90	00GA.090.00	Pressure gage01 Bar, RXA-12/16/21	1	
95	0000.OTE.00	Plug, Oil Drain G 1/2" Plastic, RXA-16	1	
96	0000.U04.00	O-Ring, Oil drain plug ø22 x T2.0, RXA-16	1	Included in Rebuild Kit
99	0060.099.00	Threaded fitting	1	
100	0060.100.00	Oil filterAWS2, RXA-100/25/40/63	1	Included in Rebuild Kit
105	0060.105.CO	Oil sump cover plate82x128 /4-e6.5, RXA-25/40	1	
106	0060.106.CO	Gasket, Oil sump cover 82x128x11, RXA-25/40	1	Included in Rebuild Kit
107	0000.B6F.00	Hex. Socket Head Cap Screw	6	
108	00HF.101.00	Sealing ring	4	
120	0060.120.A0	Exhaust filterø35*ø70*250, RXA-100/40/63	1	Included in Rebuild Kit
121	0000.U08.00	O-ring, Exhaust filterø35xø4.0, RXA-12/16/21	1	Included in Rebuild Kit
125	0020.125.00	Exh. Filter spring Assembly106x12x1.5 / M4, RXA-12/16/21	1	
126	0000.E3F.00	Slotted cheese head machine screw	1	

Pos. No.	Part No.	Description	Q ty	Notes
136	0060.136.00	Gasket, Service cover 78*102*11, RXA-100/25/40/63	1	Included in Rebuild Kit
137	00HF.101.00	Sealing ring	4	
138	0000.B6F.00	Hex. Socket Head Cap Screw	4	
139	0060.139.B0	Service cover for level sw & Heater78*102*60,3/4" PS Tap, 1" PS Tap, RXA-100/25/40/63	1	
139	0060.139.A0	Service cover for level sw78*102*60,3/4" PS Tap, RXA-100/25/40/63	1	
139	0060.139.00	Service cover 78*102*30, RXA-100/25/40/63	1	
145	0060.145.00	Exhaust cover (Threaded flange)A1, 88x88 / 4ø6.5, PF 11/4", RXA-12/16/21	1	
150	0020.150.00	Gasket, Exhaust cover 87x87x11, RXA-12/16/21	1	Included in Rebuild Kit
155	0000.B6F.00	Hex. Socket Head Cap Screw	4	
156	0060.156.00	Outlet screene5x11, RXA-12/16/21	1	
159	0020.159.A0	Exhaust valve ass y (159.1-159.6)M6xø34.7, RXA-12/16/21	2	
159-1	0020.159.01	Exhaust valve fixed bolt	2	
159-2	0020.159.02	Exhaust valve washer	2	
159-3	0020.159.03	Exhaust valve spring	2	
159-4	0020.159.04	Exhaust valve plateø8xø34.7x8, RXA-12/16/21	2	
159-5	0020.159.05	Exhaust valve lock nutM6x12.9xø4, RXA-12/16/21	2	
159-6	0020.159.06	Exhaust valve seat plateø8.2xø36x1.9, RXA-12/16/21	2	Included in Rebuild Kit
185	0200.185.A0	Gasket, Cylinder132*102/4-e9.5, RXA-100/25/40/63	1	Included in Rebuild Kit
186	0000.D8J.00	StudM8x40, RXA-16	4	
187	0000.F2E.00	Spring lock washer	4	
191	0000.F1E.00	Hexagon nutM8, RXA-16	4	
195		Spacer between Cylinder and Sump	1	
221	00HF.016.00	BSLM hydraulic fittingBSLM1/8"*ø8, RXA-100/25/40/63	1	
221S	00HF.105.00	Sealing Ringø10xø14x11, RXA-12/16/21	2	
222	00HF.013.00	Straight hydraulic fittingBMC1/8"*ø8, RXA-100/25/40/63	1	
223	00HF.005.00	Elbow hydraulic fittingBLM1/8"*ø8, RXA-100/25/40/63	1	
230	0080.230.A0	Oil tube (A)ø8*250, RXA-40	1	
231	0080.231.A0	Oil tube (B)ø8xø460, RXA-40	1	
233	00HF.016.00	BSLM hydraulic fittingBSLM1/8"*ø8, RXA-100/25/40/63	1	
233S	00HF.105.00	Sealing Ringø10xø14x11, RXA-12/16/21	2	
250	0060.250.A0	Inlet flange, lower housingø90*35, RXA-100/25/40/63	1	
251	0060.251.A0	Check valve plateø8/e57*39, RXA-100/25/40/63	1	
252	0060.252.A0	Check valve guideø8.5*ø62*H17, RXA-100/25/40/63	1	
253	0000.U09.00	O-Ring, Check valve plateø44xø3.0, RXA-100/165/25/40/63	1	Included in Rebuild Kit
254	0060.254.A0	Check valve springD50*NI6*L98*ø11.0, RXA-100/25/40/63	1	
255	0000.U12.00	O-Ring, Inlet part	2	Included in Rebuild Kit
260	0060.260.A0	Inlet flange, upper housing, HorizontalG1", Horizontal Inlet, RXA-100/25/40/63	1	
260	0060.260.00	Inlet flange, upper housing, VerticalG1 1/4", Vertical Inlet, RXA-100/25/40/63	1	
261	0060.261.CO	Inlet screenM30.D50/g59xh15.5, Plastic Rim (w/o Ribs), RXA-100/40/63	1	Included in Rebuild Kit
261	0060.261.BO	Inlet screenM30.D50/g59xh15.5, Plastic Rim, RXA-100/25/40/63	1	
261	0060.261.00	Inlet screenw0.5.Do20.D60xH15, RXA-100/25/40/63	1	
265	0000.B60.00	Hex. Socket Head Cap Screw M6x65, RXA-100/25/40/63	4	



1.800.847.0380

5131 Cash Road Dallas, TX 75247 USA

info@republic-mfg.com

www.republic-mfg.com

PARTS LIST (cont.)

Pos. No.	Part No.	Description	Q'ty	Notes
266	0000.F2D.00	Spring lock washer	4	
270*	0000.OTB.00	Plug (For N Only)G1/8", RXA-12/16/21	1	
275*	0020.275.00	Oil return valve (For N Only)M8x1.0x30, RXA-12/16/21	1	
275S*	00HF.103.00	Sealing ring (For N Only) for 275"ø8.5xø14+1t, RXA-12/16/21	1	
300		Motor mounting bracket (IEC)	1	
300	0060.300.00	Motor mounting bracket (IEC)(IEC, 90S,PCD130/4-a9, B14B, RXA-25/40	1	
301	0000.B8G.00	Allen bolt	3	
302	0000.F2E.00	Spring lock washer	3	
303	0060.303.00	Bracket for Footor 90 FRAME, RXA-25/40	1	
310B (new)	0060.310.B0	Coupling Set (311 ~313), RXA-25/40		
311B	0060.TCP.00	Coupling, pump sideTeeth type, RXA-25/40	1	
312B	0060.TCS.00	Coupling, SleevePlayamid with carbon fiber share,natural rubber, RXA-40	1	Included in Rebuild Kit
313B	0060.TCM.00	Coupling, Motor sideTeeth type, RXA-25/40	1	
310C (new)	0060.310.C0	Coupling Set (311B ~313B), RXA-25/40		
311C	0060.TCP.00	Coupling, pump sideTeeth type, RXA-25/40	1	
312C	0200.TCS.00	Coupling, SleevePlayamid with carbon fiber share,natural rubber, RXA-100/25/40/63	1	
313C	0600.TCM.00	Coupling, Motor sideTeeth type, ø24mm, RXA-40	1	
316	0000.C8C.00	Set screw (pump side)	2	
317	0000.C8C.00	Set screw (pump side)	2	
321	0060.321.A0	Fan, Pump shaft endø163xø20, RXA-40	1	
325	0000.F3D.00	Washer, Spring LockS/W,M6, RXA-100/25/40/63	1	
326	0060.326.00	Washer, Plaine6xø30x2t, RXA-100/25/40/63	1	
327	0000.A6E.00	Hexagon head screw	1	
328	0060.328.00	Fan Kit, (# 321, 325, 326, 327, 66)Kit, RXA-25/40	1	
340	0060.340.A0	Fan hooø185x80, RXA-25/40	1	
340	0060.340.00	Fan hooø185x97, RXA-25/40	1	
341	0000.E1K.00	Hexagon head screwM5x12, RXA-100/25/40/63	3	
391	0000.F5F.00	Eye boltM10, RXA-100/40/63	1	
400		Motor (IEC)	1	
400		Motor (IEC)	1	
400		Motor(IEC)	1	
400.3	0060.400.03	Motor Fan (IEC), RXA-25/40	1	
400.4	0060.400.04	Motor Fan Cover (IEC), RXA-25/40	1	
401	0000.A8H.00	Hexagon BoltM8x30, RXA-100/25/40/63	4	
402	0000.F2E.00	Spring lock washer	4	
415	0000.F1E.00	Hexagon nutM8, RXA-16	1	
416	0000.C8H.00	Slotted set screwM8x30, RXA-12/16/21/25/40	1	
417	0000.C8F.00	Slotted set screw	2	
421	0000.F8E.00	Rubber foote30x20/M8, RXA-12/16/21	3	
423	0000.F2E.00	Spring lock washer	1	
425	0060.425.00	Washerø8.5xø20x1.5t, RXA-100/25/40/63	1	
430	1111.001.00	Name plateAL, 85 x 38 x t0.4, RXA-12/16/21	1	
431	1111.003.00	Directional arrow label 15x40, RXA-16	1	
441	0060.441.A0	Protection coverPlastic Clip, for NEMA, RXA-100/202/25/40/63	1	
441	0060.441.00	Protection coverPlastic Clip, for IEC, RXA-100/202/25/40/63	1	

Pos. No.	Part No.	Description	Q'ty	Notes
311B	0060.TCP.00	Coupling, pump sideTeeth type, RXA-25/40	1	
312B	0060.TCS.00	Coupling, SleevePlayamid with carbon fiber share,natural rubber, RXA-40	1	Included in Rebuild Kit
313B	0060.TCM.00	Coupling, Motor sideTeeth type, RXA-25/40	1	
310C (new)	0060.310.C0	Coupling Set (311B ~313B), RXA-25/40		
311C	0060.TCP.00	Coupling, pump sideTeeth type, RXA-25/40	1	
312C	0200.TCS.00	Coupling, SleevePlayamid with carbon fiber share,natural rubber, RXA-100/25/40/63	1	
313C	0600.TCM.00	Coupling, Motor sideTeeth type, ø24mm, RXA-40	1	
316	0000.C8C.00	Set screw (pump side)	2	
317	0000.C8C.00	Set screw (pump side)	2	
321	0060.321.A0	Fan, Pump shaft endø163xø20, RXA-40	1	
325	0000.F3D.00	Washer, Spring LockS/W,M6, RXA-100/25/40/63	1	
326	0060.326.00	Washer, Plaine6xø30x2t, RXA-100/25/40/63	1	
327	0000.A6E.00	Hexagon head screw	1	
328	0060.328.00	Fan Kit, (# 321, 325, 326, 327, 66)Kit, RXA-25/40	1	
340	0060.340.A0	Fan hooø185x80, RXA-25/40	1	
340	0060.340.00	Fan hooø185x97, RXA-25/40	1	
341	0000.E1K.00	Hexagon head screwM5x12, RXA-100/25/40/63	3	
391	0000.F5F.00	Eye boltM10, RXA-100/40/63	1	
400		Motor (IEC)	1	
400		Motor (IEC)	1	
400		Motor(IEC)	1	
400.3	0060.400.03	Motor Fan (IEC), RXA-25/40	1	
400.4	0060.400.04	Motor Fan Cover (IEC), RXA-25/40	1	
401	0000.A8H.00	Hexagon BoltM8x30, RXA-100/25/40/63	4	
402	0000.F2E.00	Spring lock washer	4	
415	0000.F1E.00	Hexagon nutM8, RXA-16	1	
416	0000.C8H.00	Slotted set screwM8x30, RXA-12/16/21/25/40	1	
417	0000.C8F.00	Slotted set screw	2	
421	0000.F8E.00	Rubber foote30x20/M8, RXA-12/16/21	3	
423	0000.F2E.00	Spring lock washer	1	
425	0060.425.00	Washerø8.5xø20x1.5t, RXA-100/25/40/63	1	
430	1111.001.00	Name plateAL, 85 x 38 x t0.4, RXA-12/16/21	1	
431	1111.003.00	Directional arrow label 15x40, RXA-16	1	
441	0060.441.A0	Protection coverPlastic Clip, for NEMA, RXA-100/202/25/40/63	1	
441	0060.441.00	Protection coverPlastic Clip, for IEC, RXA-100/202/25/40/63	1	
449	0060.449.00	Float AssemblyM8, RXA-100/25/40/63	1	
450	0060.450.00	Float - With Rubber Pad, Pin, Orifice & O-ring, RXA-16	1	
451	0060.451.00	Nozzle AssemblyM8, with O-ring, RXA-100/25/40/63	1	
451.1	0000.U06.00	O-Ring, Check valve plateø24 x T2.0, RXA-16	1	Included in Rebuild Kit
452	0000.E1L.00	Bolt	2	
453	0060.453.00	Bolt for Banjo Fitting, oil returnM8 x p1.0x20, RXA-100/25/40/63	1	
454S	00HF.102.00	Sealing ring (For L /NM) for 285"ø8.5xø13x1t, RXA-12/16/21	2	
455	0060.455.00	Oil Return tube with Banjo fittingsø4x305, copper tube, RXA-100/25/40/63	1	
456	00HF.024.00	Elbow hydraulic fitting BLM 1/8"øx4, Br, RXA-100/25/40/63	1	
470	00HF.015.00	BLSLM hydraulic fitting	1	



1.800.847.0380

5131 Cash Road Dallas, TX 75247 USA

info@republic-mfg.com

www.republic-mfg.com

PARTS LIST (cont.)

Pos. No.	Part No.	Description	Q ty	Notes
470S-1	00HF.105.00	Sealing Ring10xø14x11, RXA-12/16/21		
470S-2	00HF.105.00	Sealing Ring10xø14x11, RXA-12/16/21		
471	0060.471.00	Oil tube(C)ø6×220, RXA-25/40	1	
472*	0060.472.A0	Gas Ballast (new) from 2009, RXA-100/25/40/63	1	
474*	0060.474.A0	Air filter with fitting (new) from 2009G1/8", RXA-100/25/40/63	1	
480	0060.480.00	Gas Ballast KitPos # 470 thru 474, RXA-100/25/40/63	1	
520	0090.520.00	Conversion kit, N Type0.5 mbar (+ GB Kit), RXA-40	1	
541	0600.451.00	Float Valve Assembly KH450-456, RXA-302/40		
550	0060.550.00	Inlet Check Valve Kit (250 -266)(250 -266), RXA-25/40/63	1	
560		Motor (IEC)-50Hz112M, B5, 5Hp, 4P, 3 Ph, 50Hz, RXA-165/202		
600		Motor(NEMA)	1	
600.3	0090.600.03	Motor Fan(NEMA), RXA-40	1	
600.4	0090.600.04	Motor Fan Cover(NEMA), RXA-40	1	
601	0090.601.00	Hexagon head screw(NEMA), RXA-40	4	
602	0090.603.00	Spring lock washer(NEMA), RXA-40	4	
612	0060.612.00	Coupling set (311A + 312B+ 613), NEMA0.875", RXA-25/40	1	
613	0060.TCM.A0	Coupling, Motor side(NEMA)Bowex type, 0.875" Bore, RXA-25/40	1	
630	0090.630.00	Motor Mounting Bracket(NEMA)For NEMA Motor, RXA-40	1	
765	0060.765.B0	Oil Level Switchwith housing, RXA-100/25/40/63	1	
770	0060.770.00	Heater with control0.5Kw, PT 1" 370x200, RXA-40	1	
800	00IF.002.00	Inlet Air FilterG 1-1/4" S, Canister (IF 130), RXA-25/40/63	1	
810	0060.810.00	Base, RXA-25/40		
900	0080.900.00	Pump Modulemodule, RXA-40	1	



1.800.847.0380

5131 Cash Road Dallas, TX 75247 USA

info@republic-mfg.com

www.republic-mfg.com