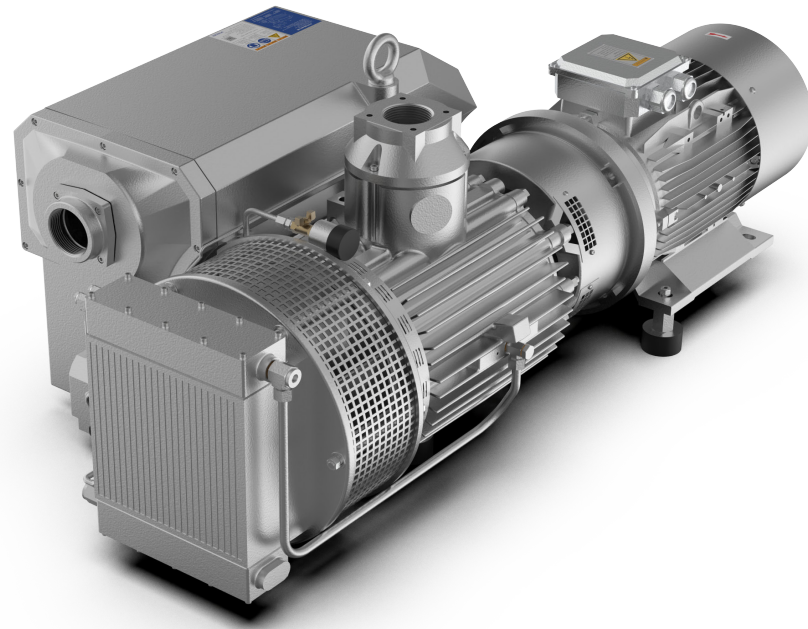


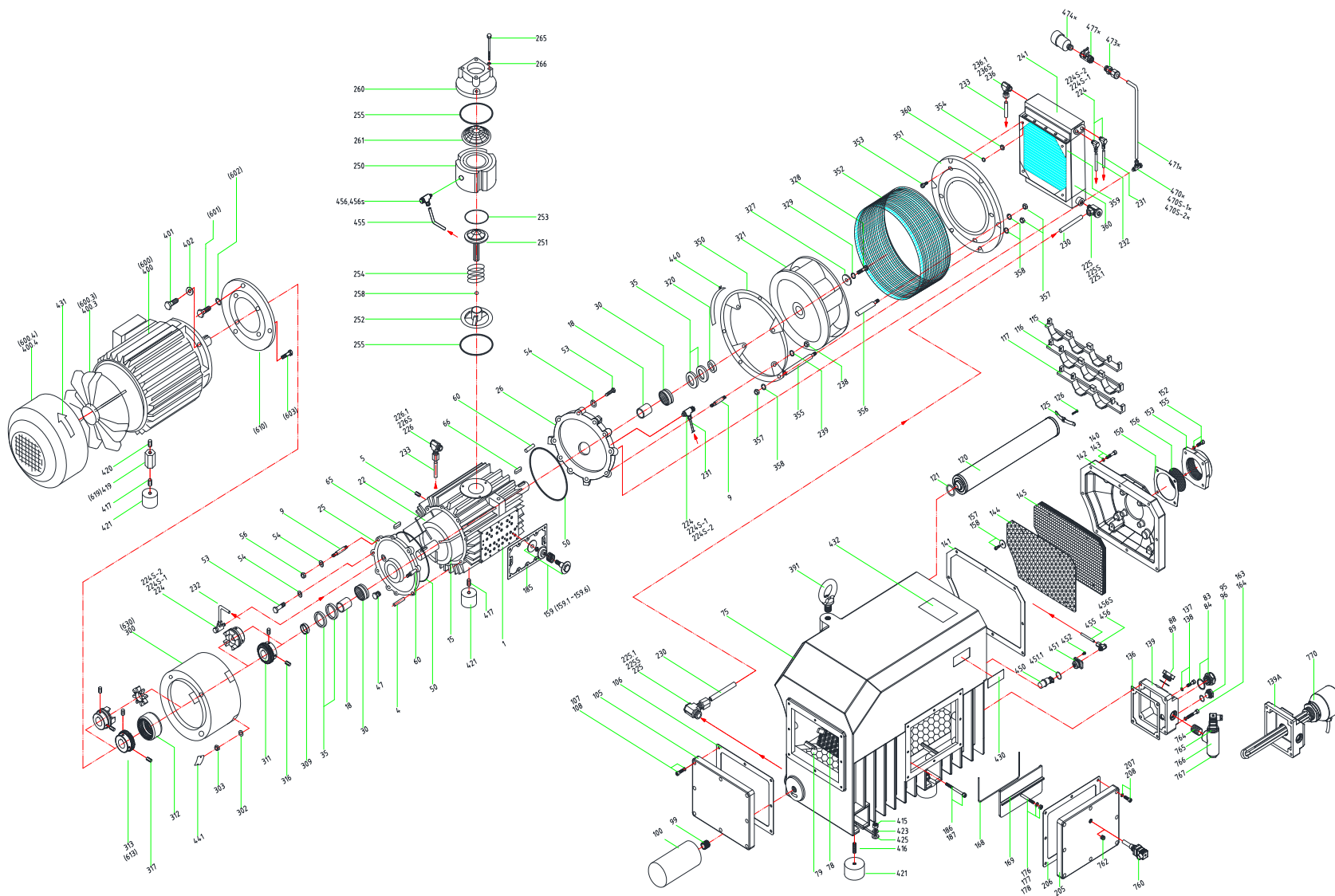
Maintenance Kits and Parts List for the RXA-402



RXA-402
OIL LUBRICATED VACUUM PUMP
Part Numbers cover all revisions and motor configuration of RXA-402

RXA-402

OIL LUBRICATED VACUUM PUMP



1.800.847.0380

5131 Cash Road Dallas, TX 75247 USA

info@republic-mfg.com

www.republic-mfg.com

PARTS LIST

Pos. No.	Part No.	Description	Qty	Notes
490	1200.490.01	Gasket Kit, RXA-402		
500	0800.500.02	Rebuild Kit, RXA-402		KITS
501	1200.501.01	Filter Kit, RXA-402		
1	0800.001.A0	Cylinders257x265, pcd300x16, RXA-402	1	
4	1200.004.00	StudM16x87, RXA-402/500/630	4	
5	0000.C68.00	Set screw (Pump side)M8x10, RXA-12/21/402/500/630	6	
9	1200.009.00	StudM16x76, RXA-402/500/630	6	
15	0800.015.00	Rotore214x265, RXA-402	1	
18	1200.018.A0	Sleeve_Bearing IR e45x62x62 (1pc), RXA-402/500/630	2	Included in Rebuild Kit
18-19		Sleeve_Bearing	2	
22	0800.022.B0	Vane265 x 72 x 5.85, carbon, RXA-402	3	Included in Rebuild Kit
25	1200.025.00	A-End plate, Motor side, RXA-402/630	1	
26	1200.026.00	B-End plate, Fan Side, RXA-402/630	1	
26	1208.026.00	End Plate, RXA-402	1	
30	0000.G05.00	Bearing RNA6909, RXA-402/500/630	2	Included in Rebuild Kit
35	0000.U5E.00	Shaft seal, vitone52x68x9, RXA-402/500/630	4	Included in Rebuild Kit
47	0000.CBA.00	Plug for Gas BallastG1/4", RXA-402/500/630	1	
50	0000.U23.00	O-ring_End plate e265x4.0, RXA-402/500/630	2	Included in Rebuild Kit
53	0000ADL.00	Hexagon head cap screwM16x50, RXA-402/500/630	10	
54	0000.F21.00	Spring Lock WasherSW_e16, RXA-402/500/630	12	
56	0000.F11.00	Hex nutM16, RXA-402/500/630	2	
60	0000.4MY.00	Taper Pin e8x60, RXA-402/500/630	4	Included in Rebuild Kit
65	0000.8KM.00	A-Shaft key, Motor Side14x9x45, RXA-402/500/630	1	
66	0000.8KM.00	A-Shaft key, Motor Side14x9x45, RXA-402/500/630	1	
75	1200.075.A0	Oil sump, RXA-402/500	1	
78	1200.078.A0	Steel demisterS-STL, RXA-402/500/630	1	
79	1200.079.A0	Sheet metal baffle560x200, RXA-402/500/630	1	
83	0000.OSG.00	Oil sight glass (option)G1", RXA-16	1	
84	0000.OTB.00	Plug (For N Only)G1/8", RXA-12/16/21	1	Included in Rebuild Kit
88	0000.OWG.A0	Plug, Oil fill G 1", RXA-402/630	1	
89	0000.UTB.00	Gasket, Oil sight glass	1	Included in Rebuild Kit
90	00GA.090.00	Pressure gage01 Bar, RXA-12/16/21	1	
95	0000.OTE.00	Plug, Oil Drain G 1/2" Plastic, RXA-16	1	
96	0000.U04.00	O-Ring, Oil drain plug e22 x T2.0, RXA-16	1	Included in Rebuild Kit
99	1200.099.00	Pipe Nipple1" - 12 UNF, RXA-402/500/630	1	
100	1200.100.00	Oil filter, RXA-402/500/630	1	Included in Rebuild Kit
105	1200.205.00	Oil sump cover plate300x240x15/8-e9, RXA-402/500/630	1	
106	1200.206.00	Gasket, Oil sump cover 300x240x11, RXA-402/500/630	1	Included in Rebuild Kit
107	0000.B8G.00	Allen bolt	8	
108	00HF.104.00	Sealing ring	8	
115	1200.115.00	Exh. Filter bracket, UpperFor 3 filter elements, RXA-402/500/630	1	Included in Rebuild Kit
116	1200.116.00	Exh. Filter bracket, MediumFor 3 filter elements, RXA-402/500/630	1	
117	1200.117.00	Exh. Filter bracket, LowerFor 2 filter elements, RXA-402/500/630	1	
120	1200.120.A0	Exhaust filtere70 x 500, RXA-402/500/630	8	Included in Rebuild Kit
121	0000.U08.00	O-ring, Exhaust filtere35x4.0, RXA-12/16/21	8	Included in Rebuild Kit
125	0020.125.00	Exh. Filter spring Assembly106x12x1.5 / M4, RXA-12/16/21	8	
126	0000.E3F.00	Slotted cheese head machine screw	8	
136	1200.136.00	Gasket, Service cover 159x154x1/4-e9, RXA-402/500/630	1	Included in Rebuild Kit

Pos. No.	Part No.	Description	Qty	Notes
137	00HF.104.00	Sealing ring	2	
138	0000.B8H.00	Allen bolt	2	
139	1200.139.B0	Service cover for level Sw and heater 159x154x60/4-e9, RXA-402/500/630	1	
139	1200.139.A0	Service cover for level Sw 159x154x60/4-e9, 3/4" PS Tap, RXA-402/500/630	1	
139	1200.139.00	Service cover159x154x60/4-e9, RXA-402/500/630	1	
140	0000.B8J.00	Allen boltM6x40, RXA-402/500/630	8	
141	1200.141.A0	Gasket, Separator cover 420x275x11, RXA-402/500/630	1	Included in Rebuild Kit
142	1200.142.A0	Separator cover plate 420x275/8-e9, RXA-402/500/630	1	
143	00HF.104.00	Sealing ring	8	
144	1200.144.A0	Perforated metal screen Wire Mesh, RXA-402/500/630	2	
145	1200.145.A0	Strainer, baffleNon Woven, RXA-402/500/630	1	Included in Filter Kit
150	1200.150.00	Gasket, Exhaust cover 125x125x11, RXA-402/500/630	1	Included in Rebuild Kit
152	00HF.104.00	Sealing ring	4	
153	1200.153.00	Exhaust Cover (threaded)125x125/4-e9, RXA-402/500/630	1	
155	0000.B8G.00	Allen bolt	4	
156	1200.156.00	Outlet screene95x11, RXA-402/500/630	1	
157	0000.B6E.00	Allen boltM6x15, RXA-402/500/630	4	
158	1200.158.00	WasherPW e6.5x9x30 Z1, RXA-402/500/630	4	
159	0500.159.00	Exhaust valve ass'y (159.1~ 159.6), RXA-250/302/402/500/630	7	
159.1	0500.159.01	Exhaust valve fixed boltM8, RXA-250/302/402/500/630	7	
159.2	0500.159.02	Exhaust valve washere32x12.5x21, RXA-250/302/402/500/630	7	
159.3	0500.159.03	Exhaust valve spring, RXA-250/302/402/500/630	7	
159.4	0500.159.04	Exhaust valve platee53x9.3x3.6, RXA-250/302/402/500/630	7	
159.5	0500.159.05	Exhaust valve lock nute18xM8x5.5L, RXA-250/302/402/500/630	7	
159.6	0500.159.06	Exhaust valve seat platee54x10x4t, RXA-250/302/402/500/630	7	
159	0500.159.A0	Exhaust valve ass'y (159.1 ~ 159.6)	7	
159-1	0350.159.A1	Exhaust valve fixed bolt, Exhaust valve washer	7	
159-3	0000.V12.00	Exhaust valve spring	7	
159-4	0350.159.A4	Exhaust valve plate	7	
159-5	0350.159.A5	Exhaust valve lock nut	7	Included in Rebuild Kit
159-6	0350.159.A6	Exhaust valve seat plate	7	Included in Rebuild Kit
163	000.B8L.00	Allen boltM8x50, RXA-402/500/630	2	
164	00HF.104.00	Sealing ring	2	
168	1200.168.00	O-Ring, Exh. Valve cover platee3 x L420, RXA-402/500/630	1	Included in Rebuild Kit
169	1200.169.00	Exh. Valve cover plate110x225, RXA-402/500/630	1	
176	0000.F2E.00	Spring lock washer	1	
177	0000.D8X.00	Stud boltM8x110, RXA-402/500/630	1	
178	0000.F2E.00	Spring lock washer	1	
185	1200.185.A0	Gasket, Cylinder 260x185x11/12-e9, RXA-402/500/630	1	Included in Rebuild Kit
186	0000.B8V.00	Allen boltM8x95, RXA-402/500/630	12	
187	0000.F2E.00	Spring lock washer	12	
205	1200.205.A0	Oil Sump Side cover plate300x240x15/8-e9, 1/2" Tap, RXA-402/500/630	1	
205	1200.205.00	Oil sump cover plate300x240x15/8-e9, RXA-402/500/630	1	
206	1200.206.00	Gasket, Oil sump cover 300x240x11, RXA-402/500/630	1	Included in Rebuild Kit
207	000.B8C.00	Allen Bolt (Socket Head Cap Screw)M8 x 25, RXA-402/500/630	9	
208	00HF.104.00	Sealing ring	8	
224	00HF.020.00	BSLM, Hydraulic fittingBSLM.G1/4" x e10, RXA-402/500/630	4	
224S-1	00HF.109.00	Sealing Ring for 221	4	Included in Rebuild Kit



1.800.847.0380

5131 Cash Road Dallas, TX 75247 USA

info@republic-mfg.com

www.republic-mfg.com

PARTS LIST (cont.)

Pos. No.	Part No.	Description	Qty	Notes
224S-2	00HF.108.00	Sealing Ring for 221	4	Included in Rebuild Kit
224.1	1200.224.01	Compression Ring10mm, RXA-402/500/630	4	
225	00HF.022.00	BSLM, Hydraulic fittingBSLM.M26 x e22, RXA-402/500/630	2	
225S	1200.115.00	Exh. Filter bracket, UpperFor 3 filter elements, RXA-402/500/630	2	Included in Rebuild Kit
225.1	1200.225.01	Compression Ring22mm, RXA-402/500/630	2	
226	00HF.021.00	BSLM, Hydraulic FittingBSLM.G3/8" x e15, RXA-402/500	1	
226S	00HF.113.00	Sealing Ring	2	Included in Rebuild Kit
226.1	1200.226.01	Compression Ring15mm, RXA-402/630	2	
230	0800.230.00	Oil tube (A)ø22x1.5 x 820, RXA-402	1	
231	0800.231.00	Oil tube (B-1)ø10 x 1 x 1145, RXA-402	1	
232	0800.232.00	Oil Tube (B-2)ø10 x 1 x 1413, RXA-402	1	
233	0800.233.00	Oil Tubeø15 x 1.5 x 912, RXA-402	1	
236	00HF.019.00	BSLM, Hydraulic fittingBSLM, G1/2" x e15, RXA-402/500/630	1	
236S	00HF.111.00	Sealing Ringøe29x2t, RXA-402/500/630	1	
236.1	1200.236.01	Compression Ring15mm, RXA-402/500/630	1	
238	0000.F11.00	Hex nutM16, RXA-402/500/630	4	
239	0000.F21.00	Spring Lock WasherS/W, ø16, RXA-402/500/630	4	
241	1200.241.A0	Oil Cooler (Top& bottom opening), RXA-402/500/630	1	
241.1	1200.241.A1	gasket, Oil Cooler, RXA-402/500/630	2	
241	1200.241.C0	Oil Cooler (STD), RXA-402/500/630	1	
250	1200.250.00	Inlet flange, Lower housing, RXA-402/500/630	1	
251	1200.251.00	Check valve plate, RXA-402/500/630	1	
252	1200.252.00	Check valve guide, RXA-402/500/630	1	
253	0000.U15.00	O-Ring, Check valve plate ø97x 5.0, RXA-402/500/630	1	Included in Rebuild Kit
254	1200.254.A0	Spring, Check valve, RXA-402/500/630	1	
255	0000.U19.00	O-Ring, Inlet Flangeø140 x 5.0, RXA-402/500/630	2	Included in Rebuild Kit
258	1200.258.00	Rubber Ballø12.7, RXA-402/500/630	1	Included in Rebuild Kit
260	1200.260.00	Inlet flange, Upper HousingG 3", RXA-402/500/630	1	
261	1200.261.00	Inlet screen (Conical), RXA-402/500/630	1	Included in Rebuild Kit
261	1200.261.A0	Inlet screen (Conical), RXA-402/500/630	1	
265	0000.B82.00	Allen boltM8x140, RXA-402/500/630	3	
266	0000.F2E.00	Spring lock washer	3	
300	1200.300.00	Motor mounting bracketsø350x230xpcø30xM16-4, RXA-402/500/630	1	
302	0000.F21.00	Spring Lock WasherS/W, ø16, RXA-402/500/630	4	
303	0000.F11.00	Hex nutM16, RXA-402/500/630	4	
309	1200.309.00	Spacer for Coupling Half, Pump Sideø58xø45.2x15t, RXA-402/500/630	1	
310	0800.310.00	Coupling set (310 -313)Coupling set, RXA-402	1	
311	0800.FCP.00	Coupling Half, Pump SideFlange type, RXA-402/500/630	1	
312	0800.FCB.00	Connection Bolt with rubber bootBolt + washer + Rubber + Nut, RXA-402/500/630	8	Included in Rebuild Kit
312.1	1200.312.01	BoltM20x80, RXA-402/500/630	8	
312.2	1200.312.02	WasherF/W, ø23.5xø32x4t, RXA-402/500/630	8	
312.3	1200.312.03	Rubber BootRubber, RXA-402/500/630	8	
312.4	1200.312.04	WasherF/W, ø20xø32x4t, RXA-402/500	8	
312.5	0000.F2K.00	Spring Lock WasherS/W M20, RXA-402/500/630	8	
312.6	0000.F1K.00	Hex nutM20, RXA-402/500/630	8	
313	0800.FCM.00	Coupling Half, Motor Side(IEC)Flange type, IEC, #180-6(e48)for 160-6(e42), RXA-402/500	1	
310 (new)	0800.310.A0	Coupling set (311 -313), RXA-402/500	1	
311	0800.TCP.00	Coupling Half, Pump SideTeeth type, ø45mm, RXA-402/500/630	1	

Pos. No.	Part No.	Description	Qty	Notes
312	0800.TCS.00	Coupling, SleevePlovamid with carbon fiber share,natural rubber, RXA-402/500/630	1	
313	0800.TCM.00	Coupling Half, Motor Side (IEC)Teeth type, ø42mm IEC 160, RXA-402	1	
313	0800.TCM.A0	Coupling Half, Motor Side (IEC)Teeth type, ø48mm IEC 180, RXA-402/500/630	1	
310 law type	0800.310.B0	Coupling set (311 -313), RXA-402/500	1	
310	0800.310.C0	Coupling set (311 -313), RXA-402	1	
311	0800.JCP.00	Coupling Half, Pump Side,law type, ø45mm, RXA-402/500/630	1	
312	0800.JCI.00	Coupling, SleeveSpider type, Sleeve, RXA-402/500/630	1	
313	0800.JCM.00	Coupling Half, Motor Side (IEC)law type, ø42mm IEC 160, RXA-402/500	1	
313	0800.JCM.A0	Coupling Half, Motor Side (IEC)law type, ø48mm IEC 180, RXA-402/500/630	1	
316	0000.C8C.00	Set screw (pump side)	2	
317	0000.C8C.00	Set screw (pump side)	2	
320	1200.320.00	Spacer for fanø 55 xø45.1 x 10, RXA-402/500/630	1	
321	1200.321.00	Fane 380 x 160 x ø45, RXA-402/500/630	1	
327	1200.327.00	Locking Discø60 x ø8.5 x 8, RXA-402/500/630	1	
328	0000.B8G.00	Allen bolt	1	
329	0000.F2E.00	Spring lock washer	1	
350	1200.350.00	Fan Support Ring (Pump Side)ø480, RXA-402/500/630	1	
351	1200.351.00	Fan Support Ring (Radiator Side)ø480x260x17t, RXA-402/500/630	1	
352	1200.352.00	Fan Guardø460x170x1.6t, RXA-402/500/630	1	
353	0000.B8G.00	Allen bolt	4	
354	0000.F1E.00	Hexagon nutM8, RXA-16	4	
355	1200.355.00	Fan Supporting BoltM12x235, RXA-402/500/630	5	
356	1200.356.00	Fan Supporting BoltM12x140, RXA-402/500/630	1	
357	0000.F1G.00	Hex nut	11	
358	0000.F2G.00	Spring Lock Washer	11	
359	1200.359.A0	Mounting Bracket for radiatorFor STD radiator, PN 120241C, RXA-402/500/630	1	
359	1200.359.A0	Mounting Bracket for radiatorFor STD radiator, PN 120241C, RXA-402/500/630	1	
360	1200.360.00	Cheese head Cap, ScrewM5 x 10, RXA-402/500/630	12	
391	0000.F5M.00	Eye boltM24, RXA-402/500/630	1	
400		Motor (IEC)	1	
400		Motor (IEC)	1	
400.3	1200.400.03	Motor fan blade, RXA-402/500/630	1	
400.4	1200.400.04	Motor fan cover, RXA-402/500/630	1	
401	0000.ADJ.00	Hexagon head screwM16x40, RXA-402/500/630	4	
402	0000.F21.00	Spring Lock WasherS/W, ø16, RXA-402/500/630	4	
415	0000.F1G.00	Hex nut	2	
416	0000.CBJ.00	Slotted set screwM12x40, RXA-402/500/630	2	
417	0000.CBH.00	Slotted set screwM12x30, RXA-402/500/630	2	
419	0800.419.00	Spacer for Foot, for IEC motorFor IEC Motor, RXA-402/500	2	
420	0000.CBJ.00	Slotted set screwM12x40, RXA-402/500/630	1	
421	0000.F8G.00	Rubber footø75 x 45 x M12, RXA-402/500/630	5	
423	0000.F2G.00	Spring Lock Washer	2	
425	1200.425.00	Washers12 x ø30x3.5, RXA-402/500/630	2	
430	1111.001.00	Name plateAl, .85 x 38 x 10.4, RXA-12/16/21	1	
431	1111.003.00	Directional arrow label 15x40, RXA-16	1	
432	1111.006.00	Label, maintenance	1	
440	1200.440.00	Guard, for Fan, RXA-402/500/630	1	
441	1200.441.00	Guard, for Coupling in mounting Bracket, RXA-402/500/630	3	



1.800.847.0380

5131 Cash Road Dallas, TX 75247 USA

info@republic-mfg.com

www.republic-mfg.com

PARTS LIST (cont.)

Pos. No.	Part No.	Description	Qty	Notes
449	0320.449.00	Float Assembly		
449	0320.449.A0	Float Assembly		
450	0060.450.00	Float - With Rubber Pad, Pin, Orifice & O-ring, RXA-16	1	
451	0500.451.00	Nozzle Assembly 1/8", with O-ring, RXA-175/402/500/630	1	
451.1	0000.U06.00	O-Ring, Check valve plates24 x T2.0, RXA-16	1	Included in Rebuild Kit
452	0000.E11.00	Bolt	2	
455	1200.290.B0	Oil Return tube Seamless Tube e6x920, RXA-402/500	1	
456	00HF.015.00	BSLM hydraulic fitting	2	
456S	00HF.105.00	Sealing Ring10x14x11, RXA-12/18/21	4	Included in Rebuild Kit
470*	00HF.020.00	BSLM Hydraulic fittingBSLM.G1/4" x e10, RXA-402/500/630	1	
470S*-1	00HF.108.00	Sealing Ring for 221	1	Included in Rebuild Kit
470S*-2	00HF.109.00	Sealing Ring for 221	1	Included in Rebuild Kit
471*	1200.471.00	Oil tube(C)10, RXA-402/500/630	1	
473*	00HF.023.00	Fitting	1	
474*	1200.474.00	Gas Ballast G3/8" x e50 x 65, RXA-402/500/630	1	
474*-1	1200.474.01	Foam Filter Element, Gas Ballast, RXA-402/630	1	
477*	0000.SCA.00	Ball Valve	1	
480*	1200.480.00	Gas Ballast KitPos # 470 thru 477, RXA-402/500/630	1	
481	1200.491.00	Filter Kit, RXA-402/500/630	1	
482	1200.492.00	Rebuild Kit, RXA-402/500/630	1	
502	1200.502.00	Gasket Kit, RXA-402/500/630	1	
503	0800.503.00	Rebuild Kit, S15/S20/400, RXA-402	1	
541	1200.541.A0	Conversion Kit, F type (w/o GB Kit) 0.5mbar F-vlv sys w/o GB Kit, RXA-402/500/630	1	
550	1200.550.00	Inlet Check Valve Kit (250 ~266), RXA-402/500/630	1	
		Motor (NEMA) - 60Hz	1	
600.3	0800.600.03	Motor fan blade, RXA-402/500	1	
600.4	0800.600.04	Motor fan cover, RXA-402/500	1	
601	0000.BDJ.00	Hex head BoltM 16 x 40, RXA-402/500	3	
602	0000.F2I.00	Spring Lock WasherS/W, e16, RXA-402/500/630	3	
603	0000.BRM.00	Allen Bolt5/8"x55, RXA-402/500/630	4	
610	0800.610.00	Motor Mounting Flange adapter (NEMA)For Nema 286TC, RXA-402/500	1	
612	0800.612.00	Coupling set (311 + 312+ 613), NEMA MotorFor Nema, RXA-402/500/630	1	
613	0800.FCM.B0	Coupling Half, Motor Side(Nema)Flange type, NEMA Motor e 1.875"(47.7), RXA-402/500	1	
612 (new)	0800.612.A0	Coupling set (311+312+613), RXA-402/500/630	1	
613	0800.TCM.B0	Coupling, Motor side(NEMA)Teeth type, e47.625mm 284TC, RXA-402/500	1	
612 Jaw type	0800.612.B0	Coupling set (311+312+613), RXA-402/500/630	1	
613	0800.JCM.B0	Coupling, Motor side(NEMA)Jaw type, e47.625mm 284TC, RXA-402/500	1	
619	0800.619.00	Spacer for foot, for Nema MotorHex bar, 38 x 68.25 x M12, RXA-402/500	2	
630	0800.630.00	Motor mounting bracket, RXA-402/500	1	
760	1200.760.00	Oil Temperature SwitchBimetal, Brass, 1/2" threads, 120°C w/connector, RXA-402/500/630	1	
762	0000.OTE.00	Plug, Oil Drain G 1/2" Plastic, RXA-16	1	
765	1200.765.00	Oil Level SwitchFloat type, SUS, N.O. w/housing, RXA-165/202/402/500/630	1	

Pos. No.	Part No.	Description	Qty	Notes
765	0060.765.A0	Oil Level Switch	1	
770	00HK.400.00	Heater with control4Kw, PT-2", RXA-402/500/630	1	
770	00HK.300.00	Heater with control3Kw, PT1-1/2" x470 x300, RXA-402/500/630	1	
770	00HK.200.00	Heater with control2Kw, PT1-1/2" x470 x300, RXA-402/500/630	1	
771	0WCK.771.00	Water Cooler kitBar plate type cooler, hoses, adapter, fittings and Valve, RXA-402/500/630	1	
790	1200.790.00	Water Separator, Automatic1510mm x e 490mm, SUS 304, RXA-402/500/630	1	
792	1200.792.00	Three Way Valve	1	
800	00IF.007.00	Inlet Air FilterG 3", Al Alloy Casting(IF 350), RXA-402/500/630	1	
810	1200.810.00	Base, RXA-402/500/630	1	
900	0800.900.00	Pump Modulemodule, RXA-402	1	
900	0808.900.00	Pump Module	1	



1.800.847.0380

5131 Cash Road Dallas, TX 75247 USA

info@republic-mfg.com

www.republic-mfg.com